

## E500 Series 3 1/4" Frame Depth Horizontal Slider

### E500 Series Horizontal Slider

#### Features

- ◇ Material
  - Extruded Aluminum
- ◇ Commercial Framing System
  - 3 1/4" main frame
  - 0.062" wall thickness of frame
- ◇ Thermally Enhanced Design
  - Azon pour and debridge thermal break is 1/2" wide in all main frame and vent rail extrusions
  - Frame and sash mitered and joined with screw fasteners
  - Fin seal wool pile weatherstripping
  - Positive interlocks
- ◇ Glazing
  - 15/16" insulating glass
- ◇ Hardware
  - Ball bearing rollers with nylon tire for easy operation
  - Gravity latch
- ◇ Screen
  - Extruded aluminum screen frame with BetterVue™ mesh

#### Benefits

- ◇ The capacity to match exterior colors for unique project facades
- ◇ The ability to facilitate large sizes for taller and wider window openings

#### Performance

- ◇ Structural & Thermal (test reports or thermal simulations available upon request)

Model	Horizontal Slider
AAMA/WDMA/CSA 101/I.S.2/A440-08 Rating	AW-50
Test Size	99" x 79"
Structural Load P.S.F.	75
Air infiltration (cfm/ft <sup>2</sup> )	<0.30
Water (No Penetration) P.S.F.	10
U-Value (ranges based on multiple Low-E/Argon combinations)	0.36 - 0.41
SHGC (ranges based on multiple Low-E/Argon combinations)	0.13 - 0.48

Due to periodic re-certification requirements, result shown may vary.

#### Options

- ◇ Available Configurations
  - Fixed-Active
  - Active-Fixed
  - Active-Fixed-Active
  - Fixed-Active-Fixed
- ◇ Muntin Choices
  - Internal or simulated divided lites available
- ◇ Hardware
  - Sweep lock
  - Night latch
  - Limited travel latch
- ◇ Nailing Fin
- ◇ Screen
  - Extruded aluminum screen frame with aluminum wire mesh
  - Extruded aluminum screen frame with sunscreen mesh
  - Extruded aluminum screen frame with stainless steel 0.009" thickness mesh
  - Security screen (limitations apply)
- ◇ Glazing
  - Capillary tubes
  - Argon gas
  - Wide variety of glazing, tinting and thickness options
- ◇ Panning & Trim Choices
  - Wide variety of panning, receptor and trim available
- ◇ Mulling
  - Wide variety of structural mulls
- ◇ Specialty
  - Attached exterior or interior storm window
  - Extension jambs

Operating Force: 22 lbf (maintain motion), 1 lbf (latches)

Our products are tested to the standards of and certified by some of the foremost organizations in the fenestration industry.

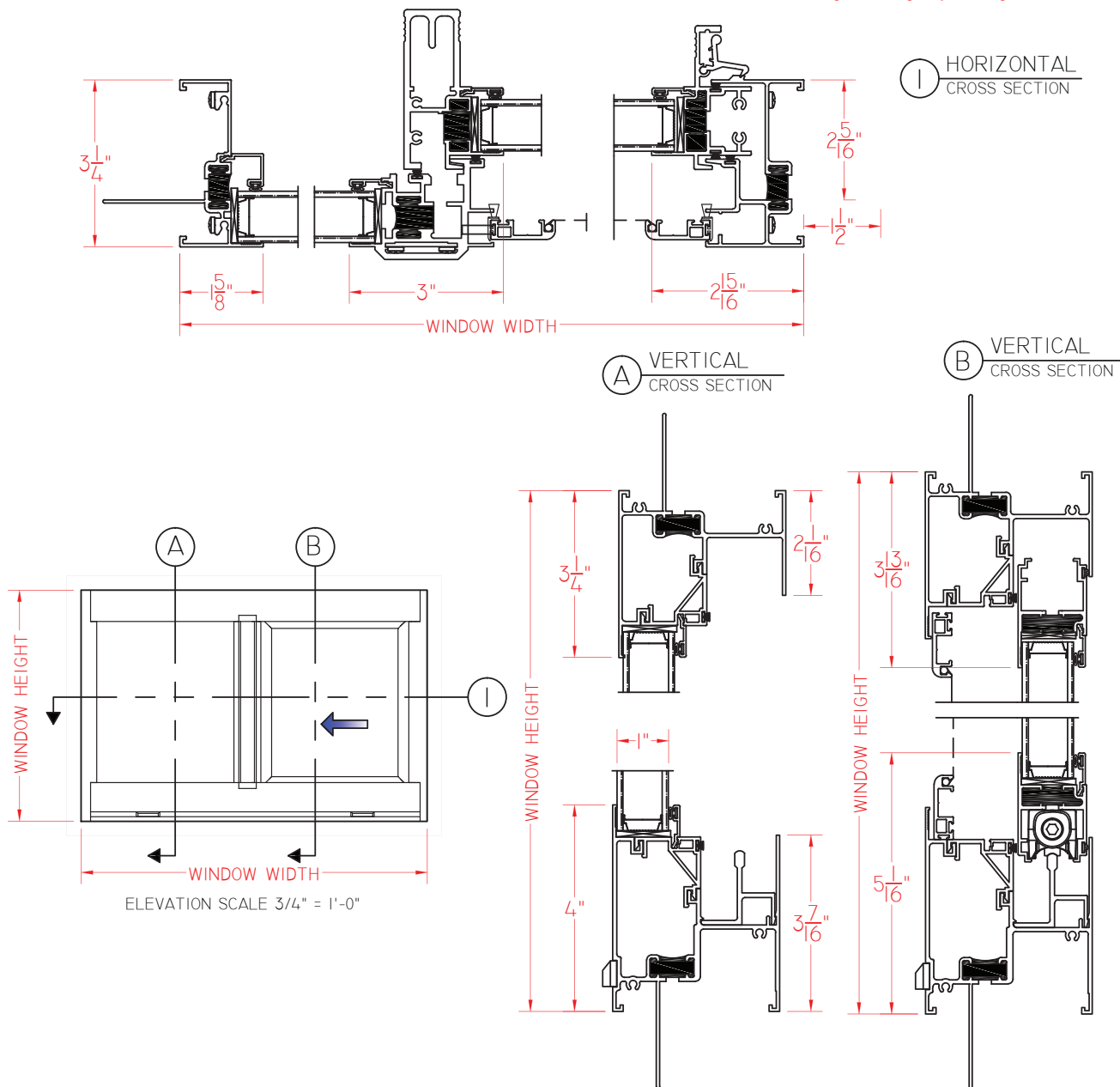




# E500 Series 3 1/4" Frame Depth Horizontal Slider

## E500 Series Horizontal Slider with Nailing Fin

This document contains confidential and proprietary information intended for the private use of Quaker.  
© 2016 Quaker Window Products Co., Inc. All rights reserved.  
Quaker reserves the right to change any/all designs without notice.



SCALE 1:3

Our products are tested to the standards of and certified by some of the foremost organizations in the fenestration industry.

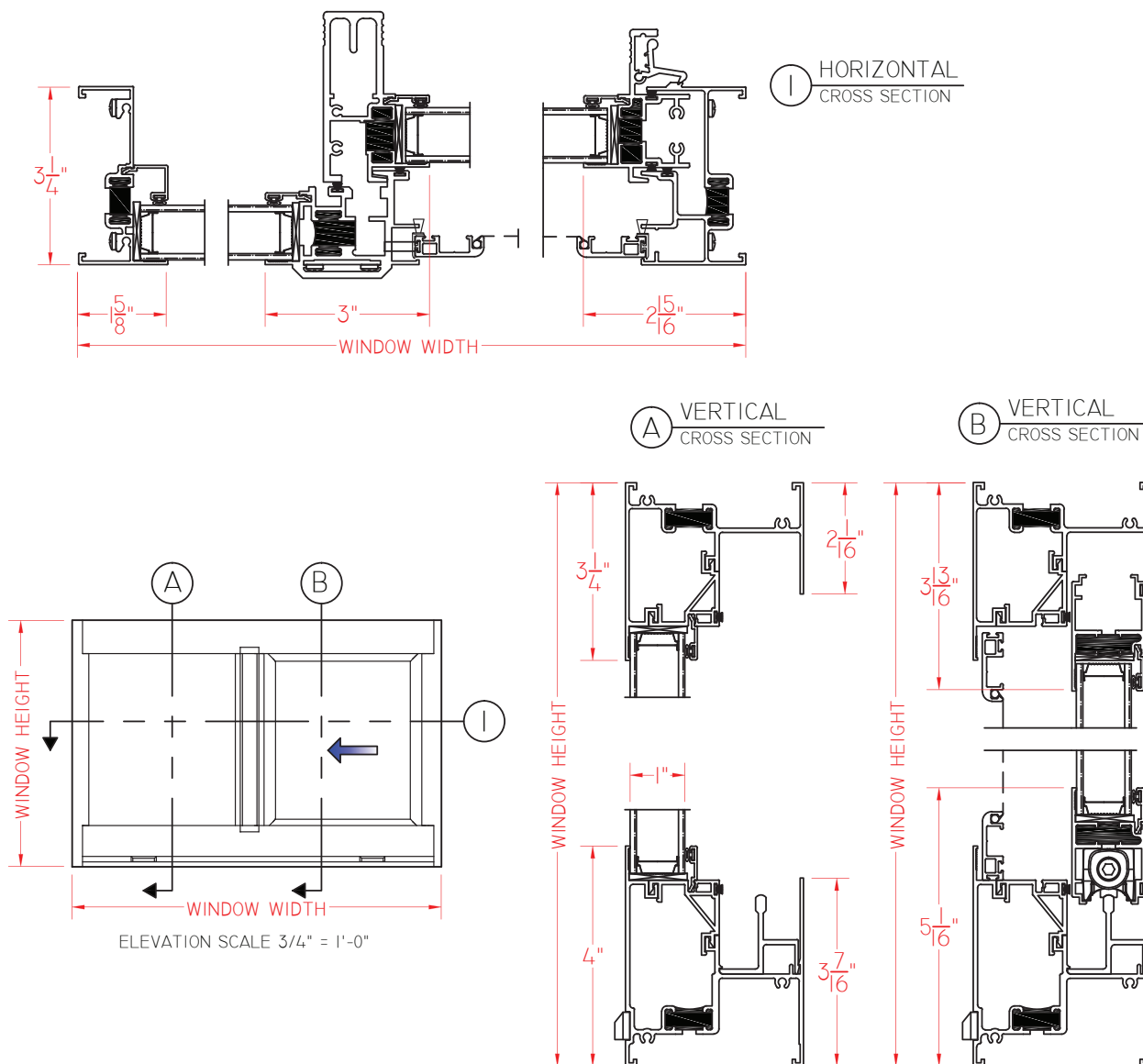




# E500 Series 3 1/4" Frame Depth Horizontal Slider

## E500 Series Horizontal Slider without Nailing Fin

This document contains confidential and proprietary information intended for the private use of Quaker.  
© 2016 Quaker Window Products Co., Inc. All rights reserved.  
Quaker reserves the right to change any/all designs without notice..



SCALE 1:3

Our products are tested to the standards of and certified by some of the foremost organizations in the fenestration industry.

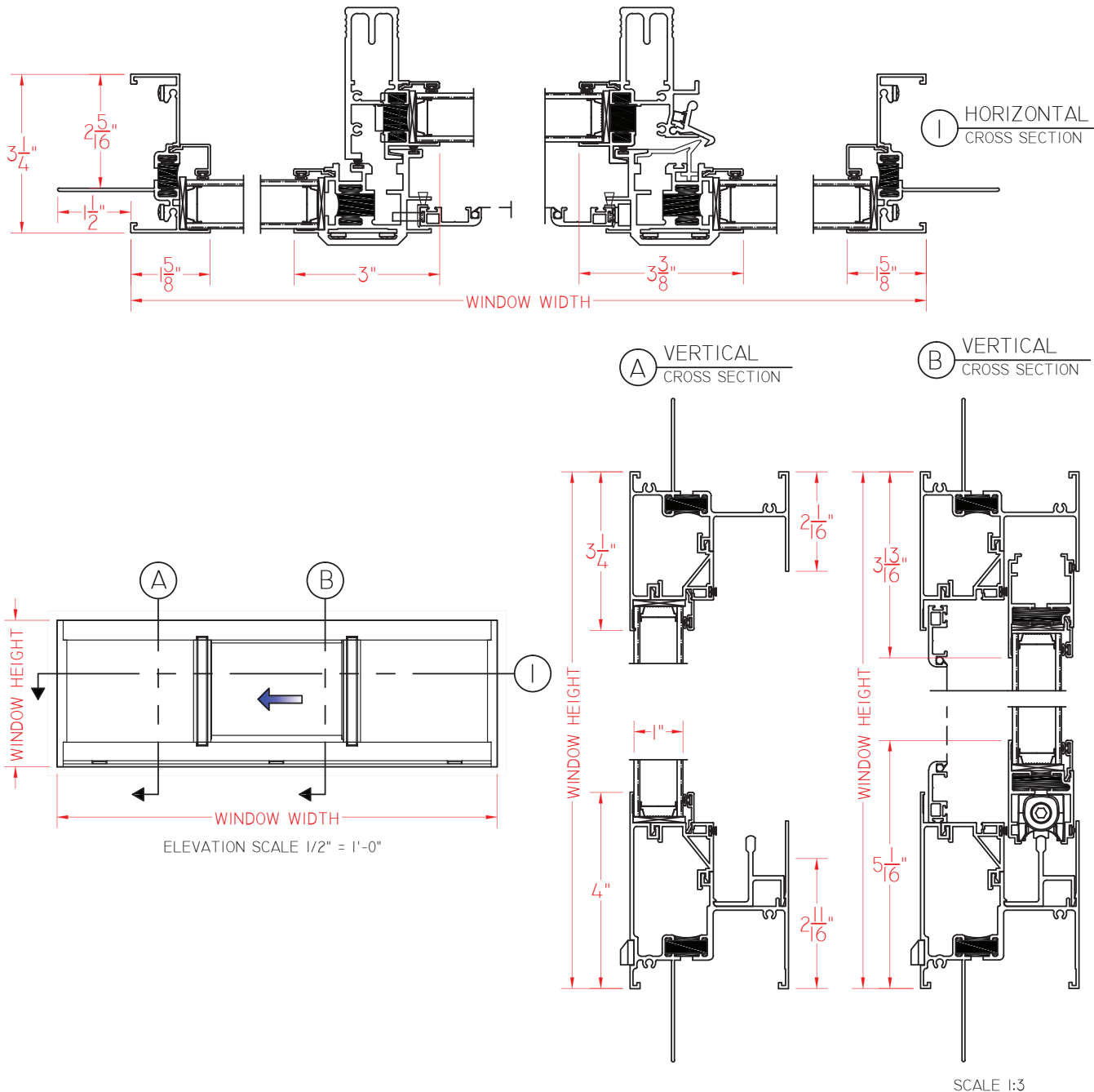




# E500 Series 3 1/4" Frame Depth Horizontal Slider

## E500 Series Center Vent Horizontal Slider with Nailing Fin

This document contains confidential and proprietary information intended for the private use of Quaker.  
© 2016 Quaker Window Products Co., Inc. All rights reserved.  
Quaker reserves the right to change any/all designs without notice..



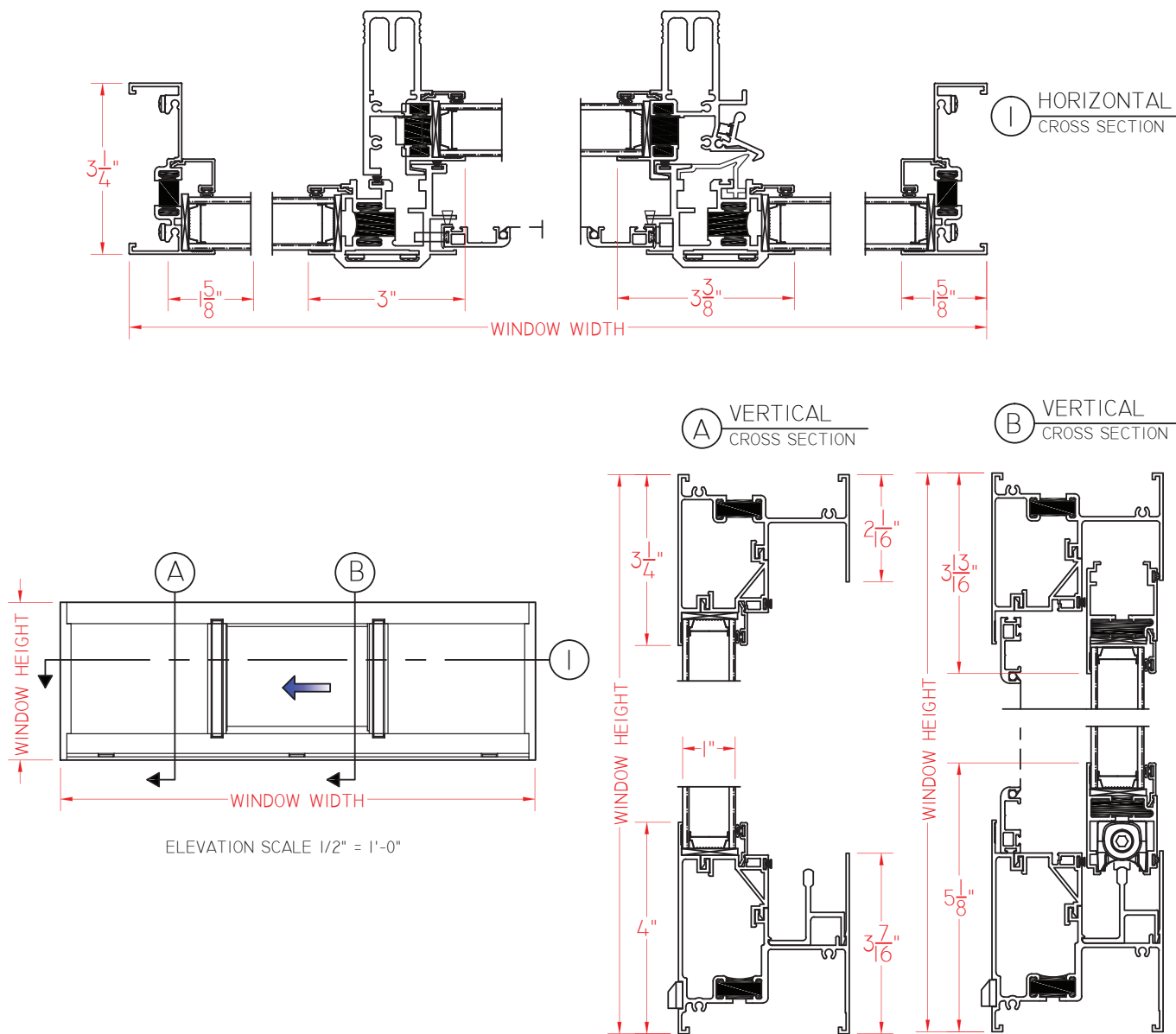
Our products are tested to the standards of and certified by some of the foremost organizations in the fenestration industry.





## E500 Series Center Vent Horizontal Slider without Nailing Fin

This document contains confidential and proprietary information intended for the private use of Quaker.  
© 2016 Quaker Window Products Co., Inc. All rights reserved.  
Quaker reserves the right to change any/all designs without notice.



SCALE 1:3

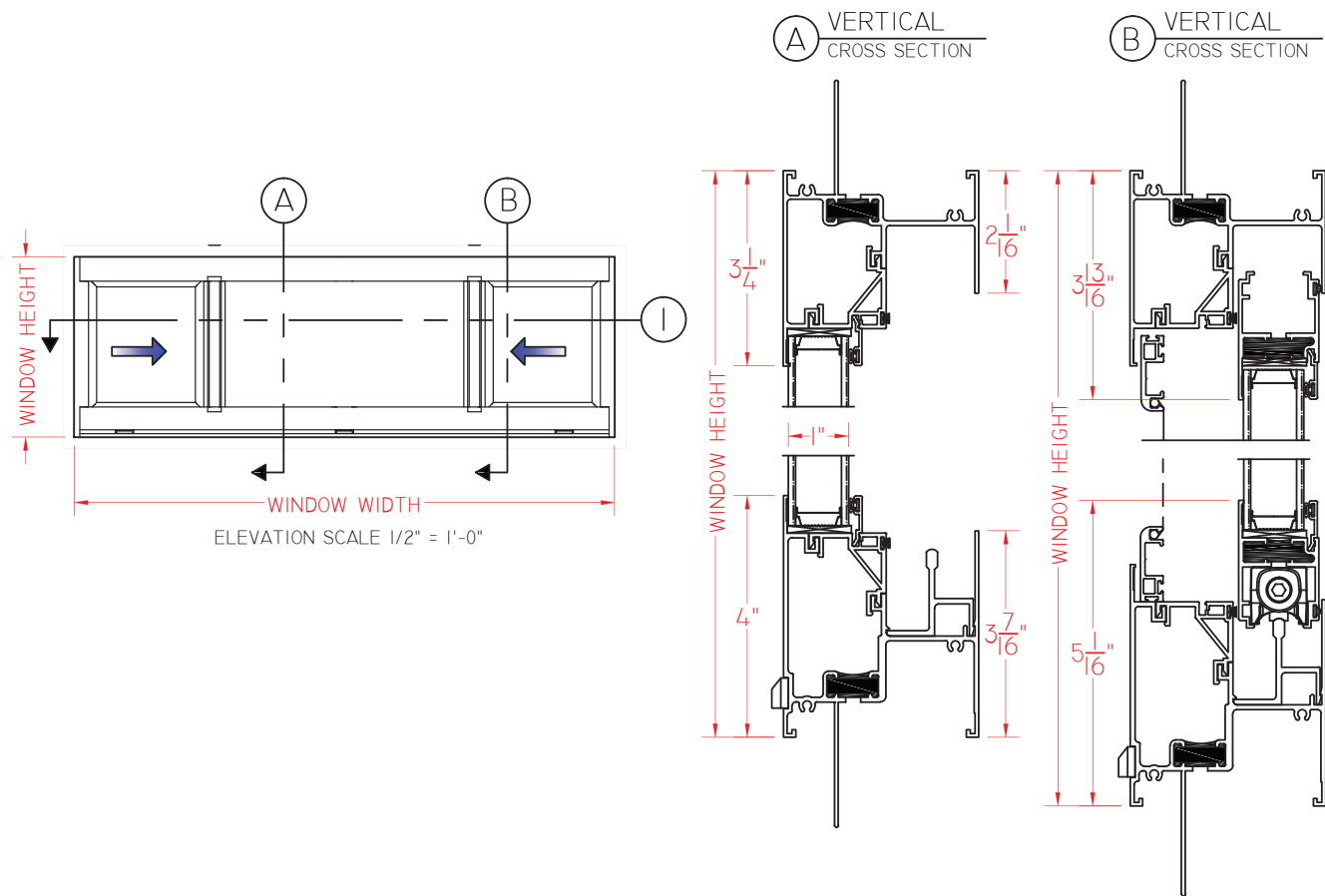
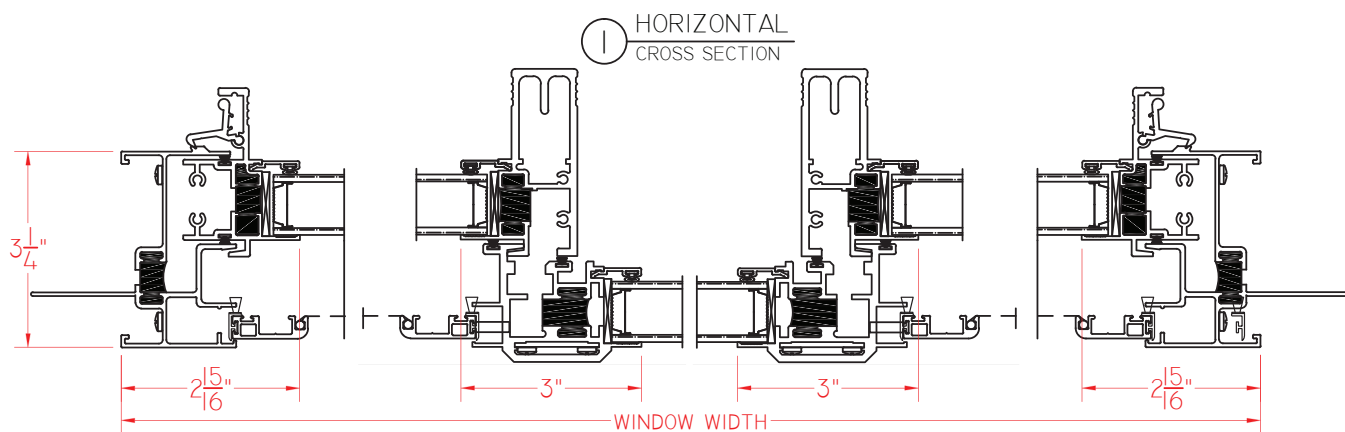
Our products are tested to the standards of and certified by some of the foremost organizations in the fenestration industry.





## E500 Series End Vent Horizontal Slider with Nailing Fin

This document contains confidential and proprietary information intended for the private use of Quaker.  
© 2016 Quaker Window Products Co., Inc. All rights reserved.  
Quaker reserves the right to change any/all designs without notice.



SCALE 1:3

Our products are tested to the standards of and certified by some of the foremost organizations in the fenestration industry.

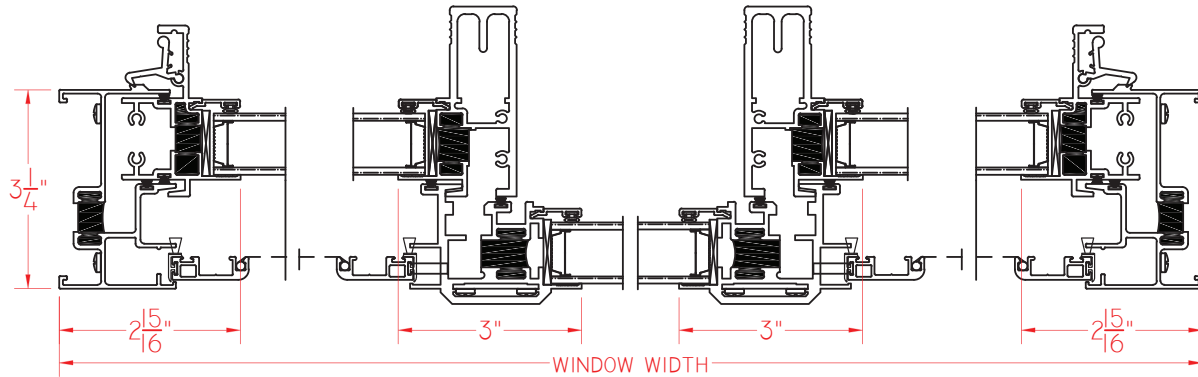




## E500 Series End Horizontal Slider without Nailing Fin

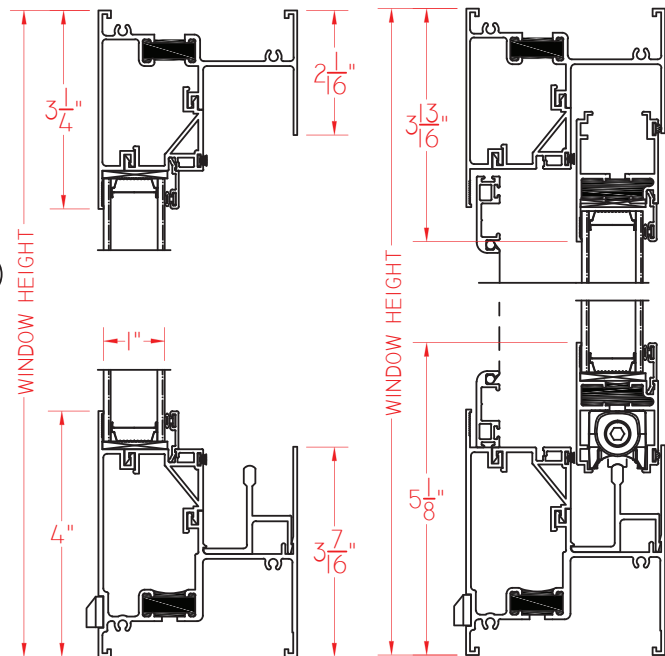
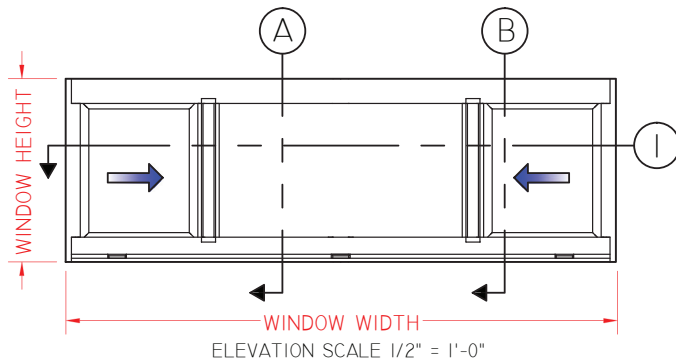
This document contains confidential and proprietary information intended for the private use of Quaker.  
© 2016 Quaker Window Products Co., Inc. All rights reserved.  
Quaker reserves the right to change any/all designs without notice..

**I** HORIZONTAL  
CROSS SECTION



**A** VERTICAL  
CROSS SECTION

**B** VERTICAL  
CROSS SECTION



SCALE 1:3

Our products are tested to the standards of and certified by some of the foremost organizations in the fenestration industry.

